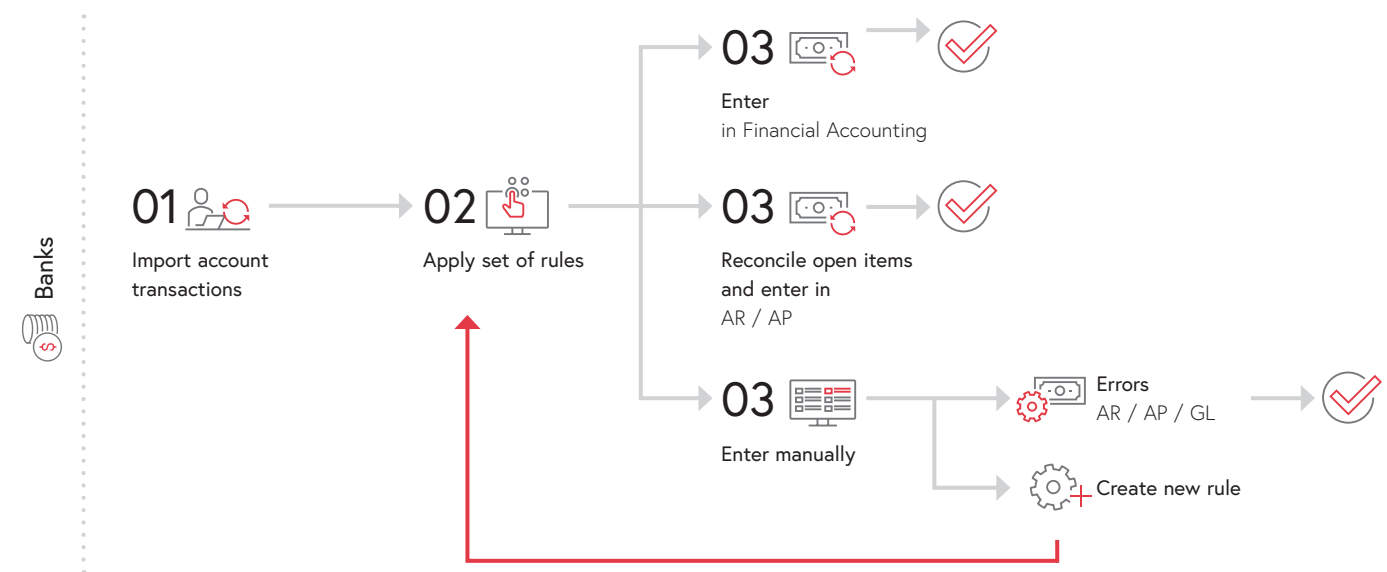


Enter Account Transactions

Abacus Electronic Banking

Process overview: Enter account transactions



The integrated and automated solution for reconciling open debit and credit items and booking recurring and individual entries to the financial accounting.

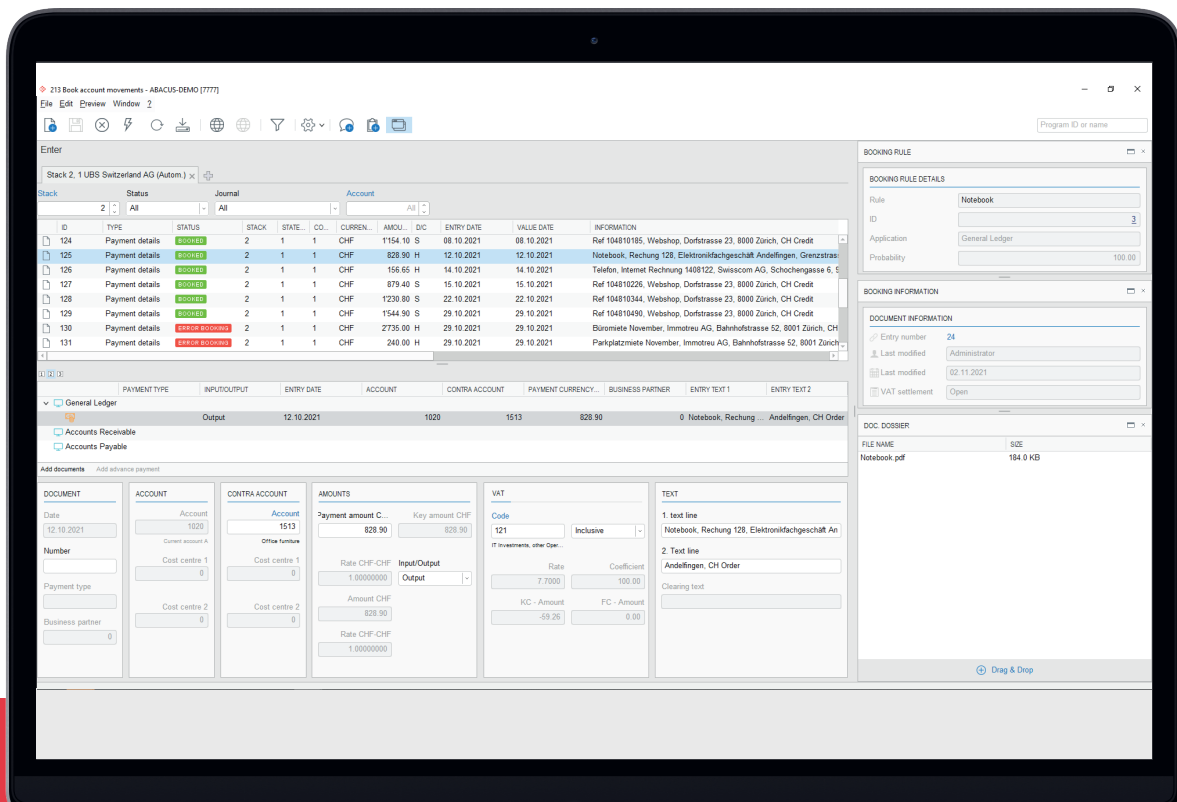
Never before has it been so easy to process bank data and maintain an up-to-date liquidity overview. Account transactions can be imported into Abacus Electronic Banking securely, automatically and at any time via connection to a bank account. Many financial institutions are already directly linked. Account transactions can also be imported manually.

During the subsequent process of importing the account transactions, bank data passes through a set of rules in Abacus Electronic Banking. This turns bank transactions into bookings. An automatic reconciliation of the open items is also carried out using the corresponding rules. The open items are then cleared and settled when they are credited or debited to the bank account. For partial payments, the balance remains open. The payment conditions are taken into account, so that, for example, payments

with cash discount deductions can also be made automatically.

Account transactions that do not affect documents in the sub-ledgers are entered directly in the financial accounting. Recurring entries, such as rent, can be automated by using a set of rules. Three options are available for account transactions that cannot be processed automatically: create a new rule, assign the transaction to an existing rule or create a manual entry. Such account transactions can also be entered manually in the financial accounting, accounts receivable or accounts payable.

The rule set option allows the bank's account transactions to be processed, or booked, efficiently, securely and with consistent quality.



Your benefits

- Overview of account transactions and liquidity
- Easily define and adapt dynamic rules
- High level of automation instead of manual account reconciliation
- Consistent, high quality
- Enormous time saving
- Direct entry of all account transactions
- Integrated into financial accounting, accounts receivable and accounts payable

More information can be found at: abacus.ch/en/electronic-banking

Abacus Research AG
 Abacus-Platz 1
 9300 Wittenbach SG
 +41 71 292 25 25
 info@abacus.ch

