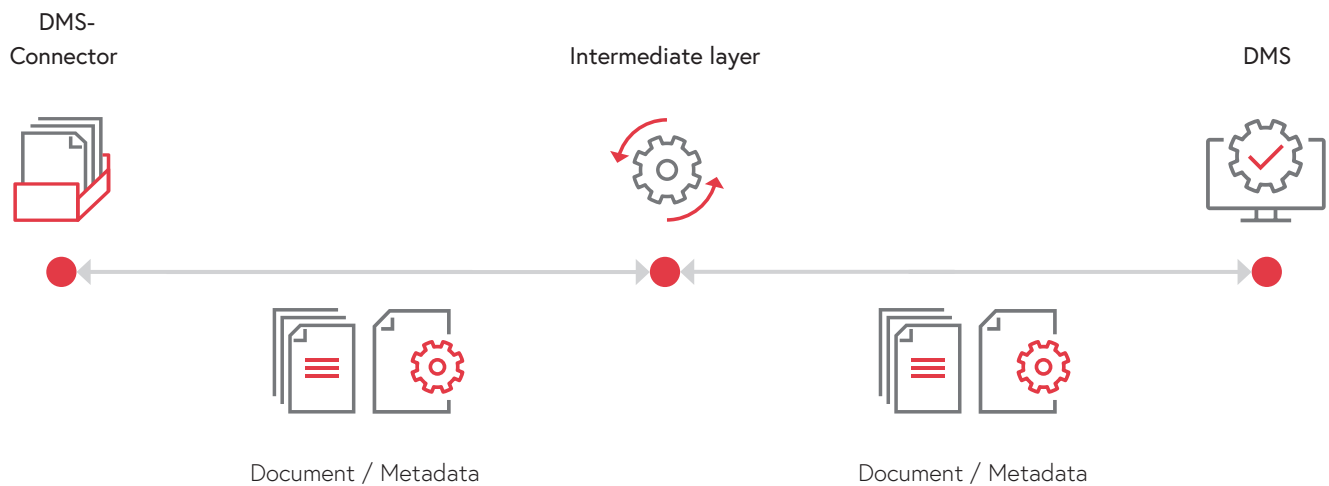


DMS-Connector

Abacus Archiving & Scanning additional function

Process overview: Filing documents external DMS



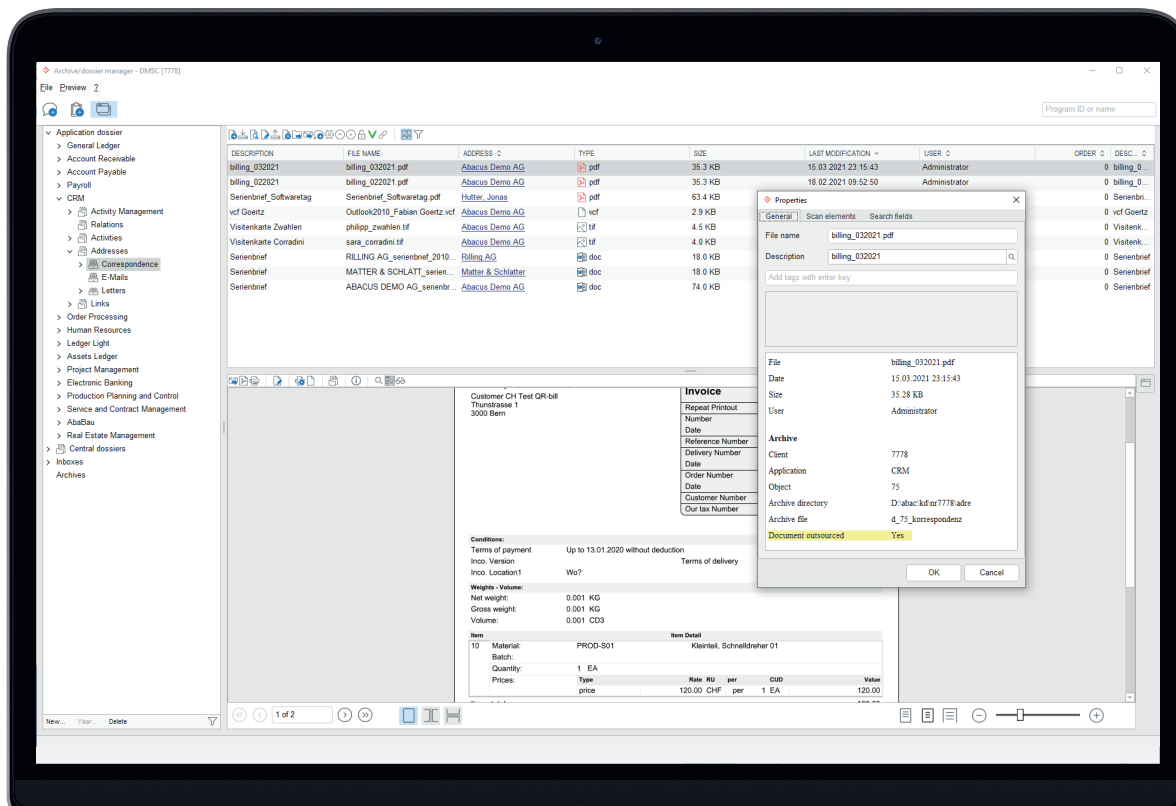
The Abacus DMS Connector connects your existing document storage system (DMS) seamlessly and easily with Abacus Business Software and puts an end to redundant company documents.

Archiving is already integrated into Abacus Business Software as a document storage option. This is an increasingly central function in the ERP environment. Documents are information carriers in company processes and in the exchange with customers. Almost all important processes in a company are supported by documents. Today, these are mainly in electronic form.

In many cases, in addition to Abacus ERP, one of the many available DMS systems is already being operated, which specialises entirely in the management and storage of documents.

The Abacus DMS Connector enables you to use the power of both systems at the same time without having to forego familiar work routines. Your DMS system can be seamlessly integrated into Abacus Business Software via an interface which synchronises documents bi-directionally between the two systems.

The DMS connection is completely transparent for the Abacus user. The documents are physically stored exclusively in the DMS, but can still be viewed, edited and opened from Abacus dossiers.



Your benefits

- Legally compliant filing ensures GebüV/GDPR
- Automated, bi-directional comparison of documents and metadata retrieval
- Complete, seamless integration into existing Abacus programmes (dossiers, evaluations with documents attached, reports, search)
- Saves storage space - no redundant data storage in Abacus and DMS, separate storage for documents and ERP system
- Extends possibilities for mapping company processes
- Generalized DMS interface*

*The interfaces to the respective DMS are developed and provided by Abacus solution partners or official partners of the respective DMS manufacturer.

The following interfaces are currently available:

- M-Files
Solution partner: One Solutions SA
- ELO
Solution partner: ECM Solutions GmbH
- Kendorx
Solution partner: FIVE Informatik AG
- Canon Therefore
Solution partner: Canon AG
- S3 systems can also be connected

For more information visit: abacus.ch/archiving-scanning.

Abacus Research AG

Abacus-Platz 1
9300 Wittenbach SG
+41 71 292 25 25
info@abacus.ch

